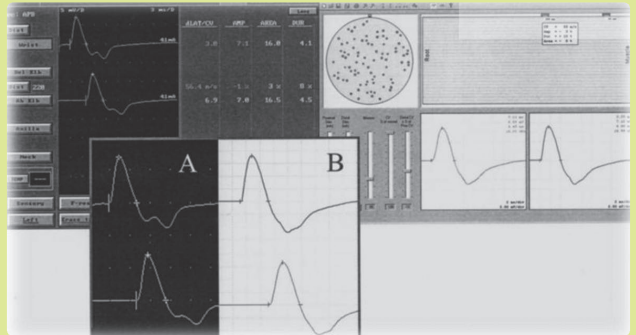
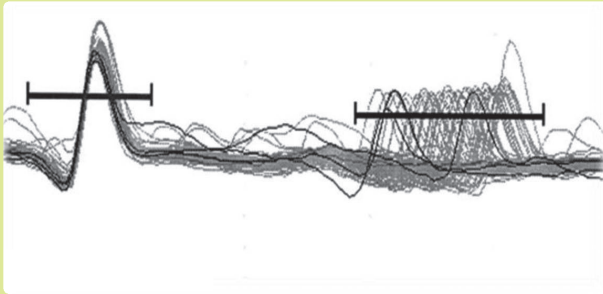
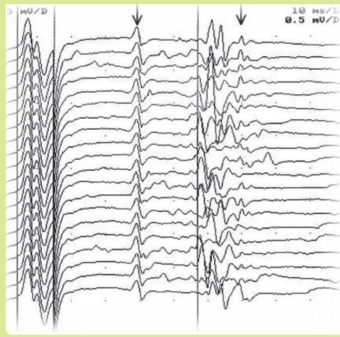


# Advanced EMG course Muskelzentrum/ALS Clinic



Saturday, 24th March 2012  
09.30 – 17.00  
Muskelzentrum/ALS clinic, St.Gallen

Under the auspices of the Swiss Society of Clinical Neurophysiology

Dear colleagues

Electromyography and nerve conduction studies are an essential part of the neurologist's every day practice. While most are familiar with the basics of neurophysiologic testing and the interpretation of results, more sophisticated methods such as quantitative EMG and Single Fibre EMG are rarely used in the clinical routine.

The goal of this course is to equip you with the knowledge about these sophisticated neurophysiological techniques and to improve your skills, performance and sensitivity in the diagnostic work-up of neuromuscular disorders.

Professor Erik Stålberg (Uppsala, Sweden) has been invited to give an «advanced EMG course» in St.Gallen, where he will share his enormous expertise on EMG and nerve conduction studies with us. His role in the development of these techniques is known to every neurologist using EMG.

The course key features are Single Fibre EMG using concentric needle electrodes to reliably diagnose disturbances of the neuromuscular junction without the need of special equipment and quantitative EMG.

A «hands-on»-session will help you to put theory directly into practice. As the number of participants is limited, registration is on a «first come – first serve» basis. The target audience are neurologists with broad experience in routine neurophysiological techniques.

We are looking forward to welcoming you in St.Gallen.



Dr. Christoph Neuwirth



PD Dr. Markus Weber

# Program

**Speaker:** Prof. Erik Stålberg

- 09:30–10:15 Pitfalls of nerve conduction studies
- 10:15–11:00 F-waves and their importance in demyelinating disease
- 11:00–12:00 News about late components
- 12:00–13:00 *Lunch*
- 13:00–14:00 EMG: generation of EMG signals, cannula recording, Jiggle
- 14:00–14:30 Quantitative EMG in every day clinical practice
- 14:30–15:00 SFEMG: theory
- 15:00–15:30 Coffee break
- 15:30–16:00 Jitter with Concentric needle electrode
- 16:00–17:00 «Hands-on» or large group demo

**Language:** English

## Information

### Speaker

Prof. Erik Stålberg  
Department of Neuroscience,  
Clinical Neurophysiology,  
Uppsala University, Sweden

### Location

Muskelzentrum/ALS clinic  
House 33, Room 126, 1th floor  
Greithstrasse 20  
9007 St.Gallen  
Phone +41 (0)71 494 35 81  
Fax +41 (0)71 494 63 89  
[www.muskelzentrum.kssg.ch](http://www.muskelzentrum.kssg.ch)

### Organization

Dr. Christoph Neuwirth  
Muskelzentrum/ALS clinic  
Kantonsspital St.Gallen  
9007 St.Gallen  
Phone +41 (0)71 494 3581  
Email [christoph.neuwirth@kssg.ch](mailto:christoph.neuwirth@kssg.ch)  
[www.muskelzentrum.kssg.ch](http://www.muskelzentrum.kssg.ch)

### Credits

SNG 6.5

### Fee

200.– CHF course fee, to be paid in advance (see Registration form)

# Directions

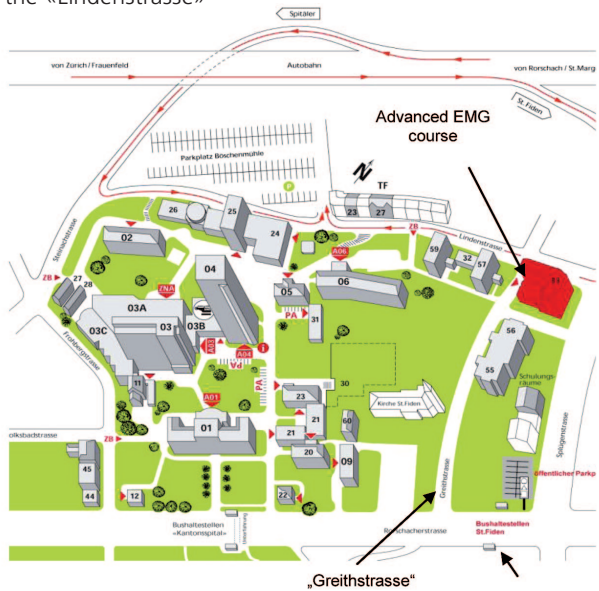
## By car

Approach from Zurich:

- Highway A1, Exit 82 St.Gallen-St.Fiden • turn right at the signal • turn right again at the next signal to the «Lindenstrasse» • 30 meters further on the left you find the entrance, «Haus 33» • a parking ramp «Böschmühle» is further down following the «Lindenstrasse»

Approach from St. Margrethen:

- Highway A1, Exit 82 St.Gallen-St.Fiden • after the tunnel turn left to the «Steinachstrasse» • after a few meters turn left to the «Lindenstrasse» • after 400 meters you find the entrance, «Haus 33» • a parking ramp «Böschmühle» is further down following the «Lindenstrasse»



## By train

Every 30 minutes from Zurich, Main Railway Station (about 1 hour trip time).

Take the bus from St.Gallen, Main Railway Station (No. 1, 4, 7). Bus stop «St.Fiden».

Follow the «Greithstrasse» (see map).

NEUROLITE

Advanced Medical Solutions



ALLERGAN Synmedic

We like to thank the involved companies for sponsoring this course